



# Do's and Don'ts on transmitters after Covid-19 lockdown

During this period of lockdown some transmitters have been switched off because there was no possibility to grant the technical assistance.

Sometimes the maintenance of the stations was delayed respect to the planned timetable...

It is important to follow some recommendations and to do some checks before to launch the transmitters again after lockdown period, in order to prevent any kind of failure.

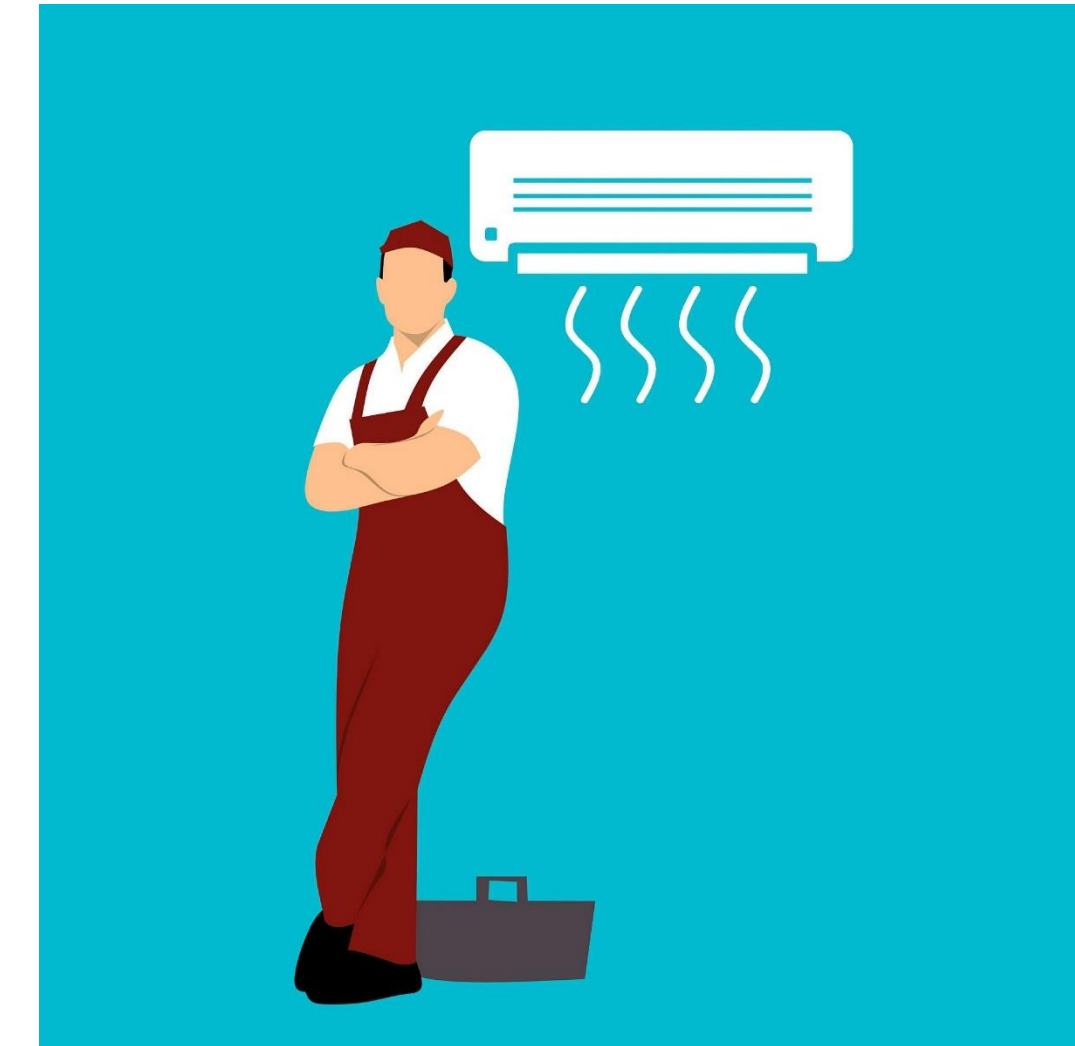


This list of checks can be valid also for periodic maintenance inside the station: **remember that checks done periodically maintain the transmitter in good conditions and they will save your money for repairs in future!**

# What to do after lockdown period



- ✓ Do not turn ON power without physical inspection of the equipment and electrical table.
- ✓ Verify the air conditioner in the station still works properly: if not so, please call for the correct maintenance of it. Remember that the heat is a very high source of stress for the RF components.



- ✓ Keep the station clean from spiders, dust or any rodents or reptile. Live as well as dead elements/parts could be conductive and can cause blasts or short circuits at power up.



- ✓ If you can, remove the top cover and verify that inside the unit there's no dust or small insects that can create short circuits. In case, clean the unit with air blowers or eventually with antistatic brushes to avoid any damage on PCB components.



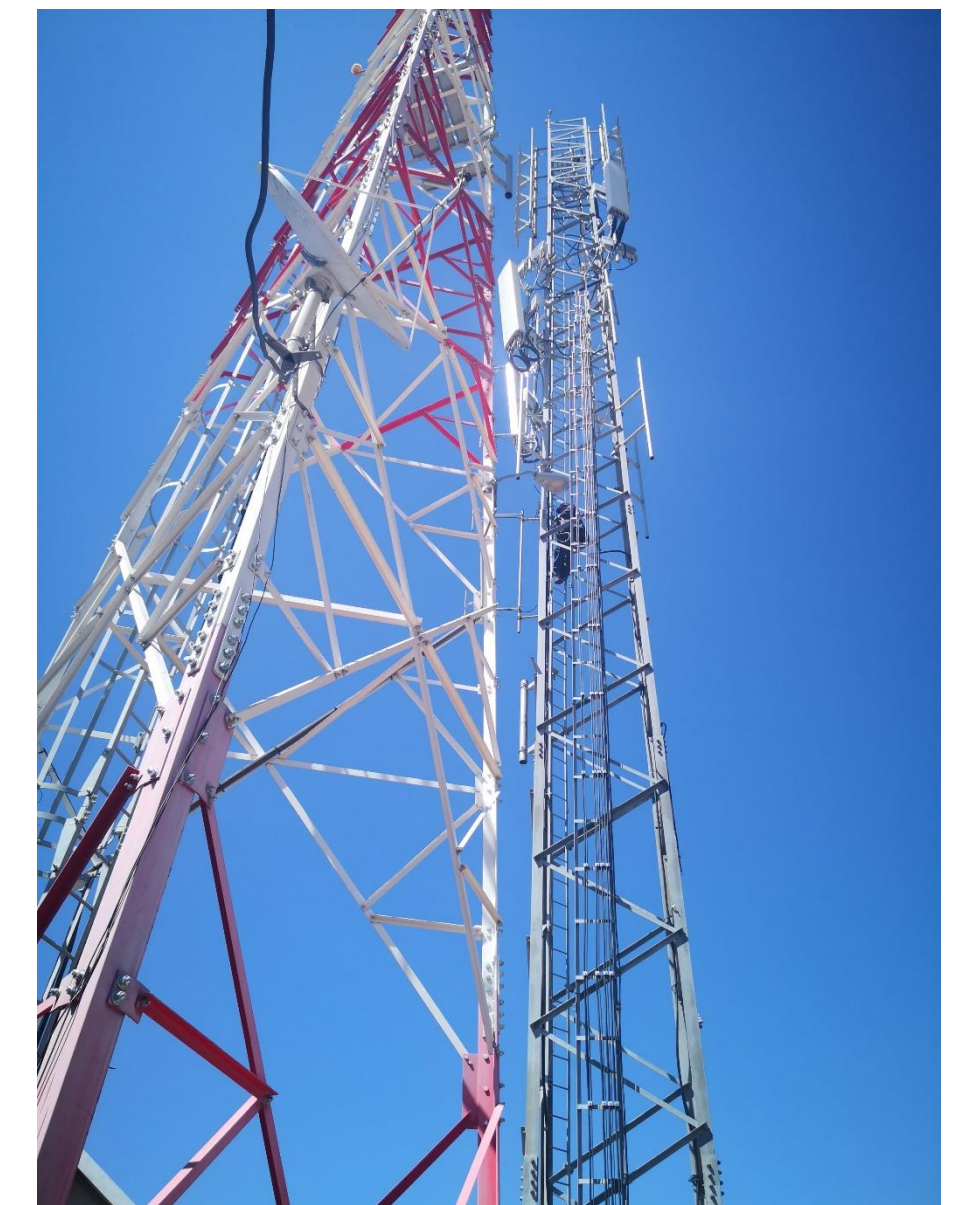
- ✓ Clean the front panel filters and rear panel fans from dust / sand accumulated during the previous functioning. Also in this case, use air blowers and don't clean them with water!
- ✓ Check if the fans rotate freely and without any noise.



# What to do after lockdown period



- ✓ Even if the power and control cables have not been removed before lockdown, check if they're well fixed on the back panel of equipment.
- ✓ Check 3-phase and single-phase voltage and if the UPS /stabilizer is working properly. In case of long period of inactivity, the batteries could have been discharged.
- ✓ Check carefully the antenna system and the feeder cable. Verify there is no visible damage on it.

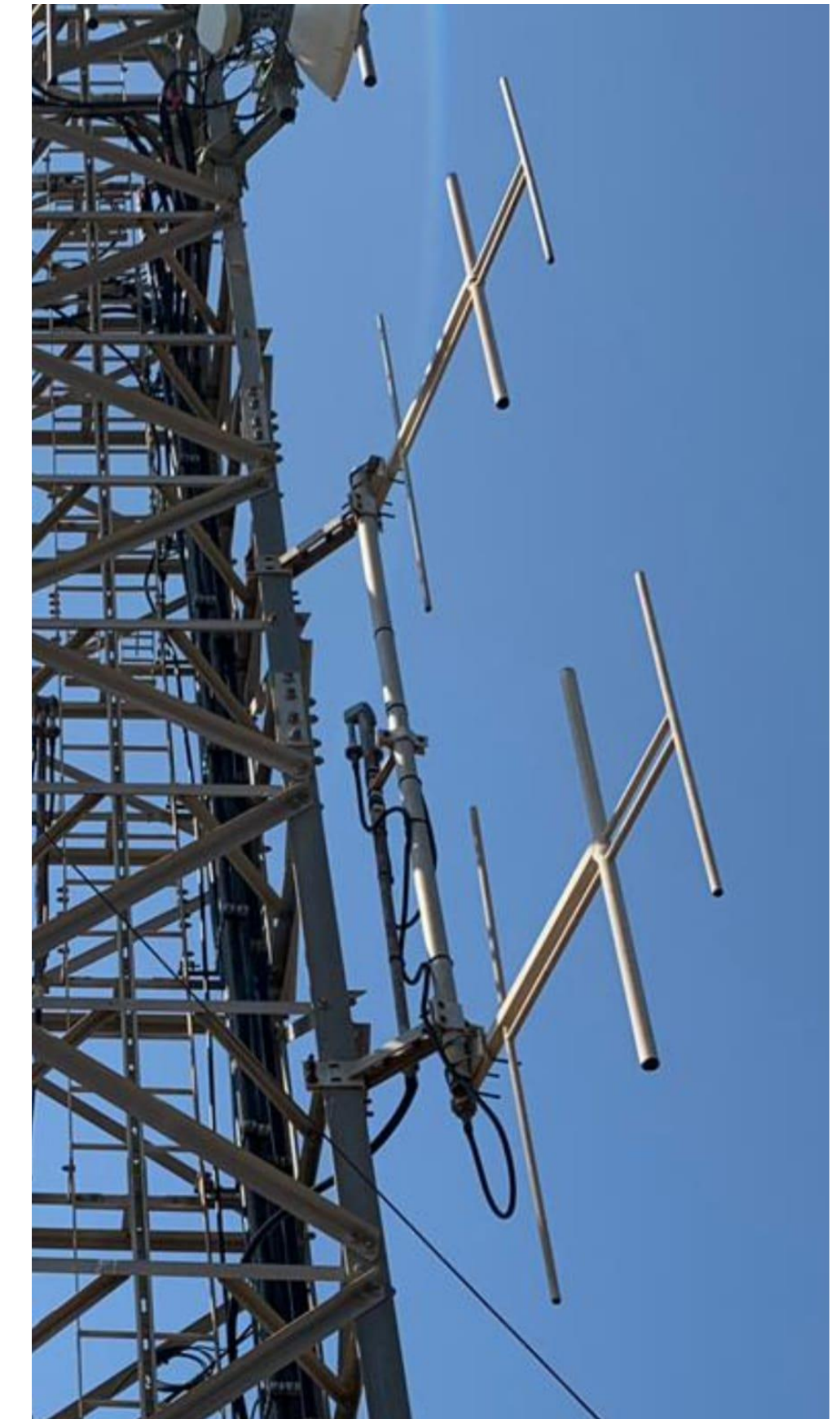




- ✓ In case you have a dummy load in the station, it would be better to test the transmitter on it before the connection to the antenna system, so you will know if any problem of reflected power is related to the transmitter itself or to the antenna system.  
Remember that high reflected power could be due also to water or humidity inside the antennas, in case the test of the transmitter on dummy load shows that the transmitter is not having problems!



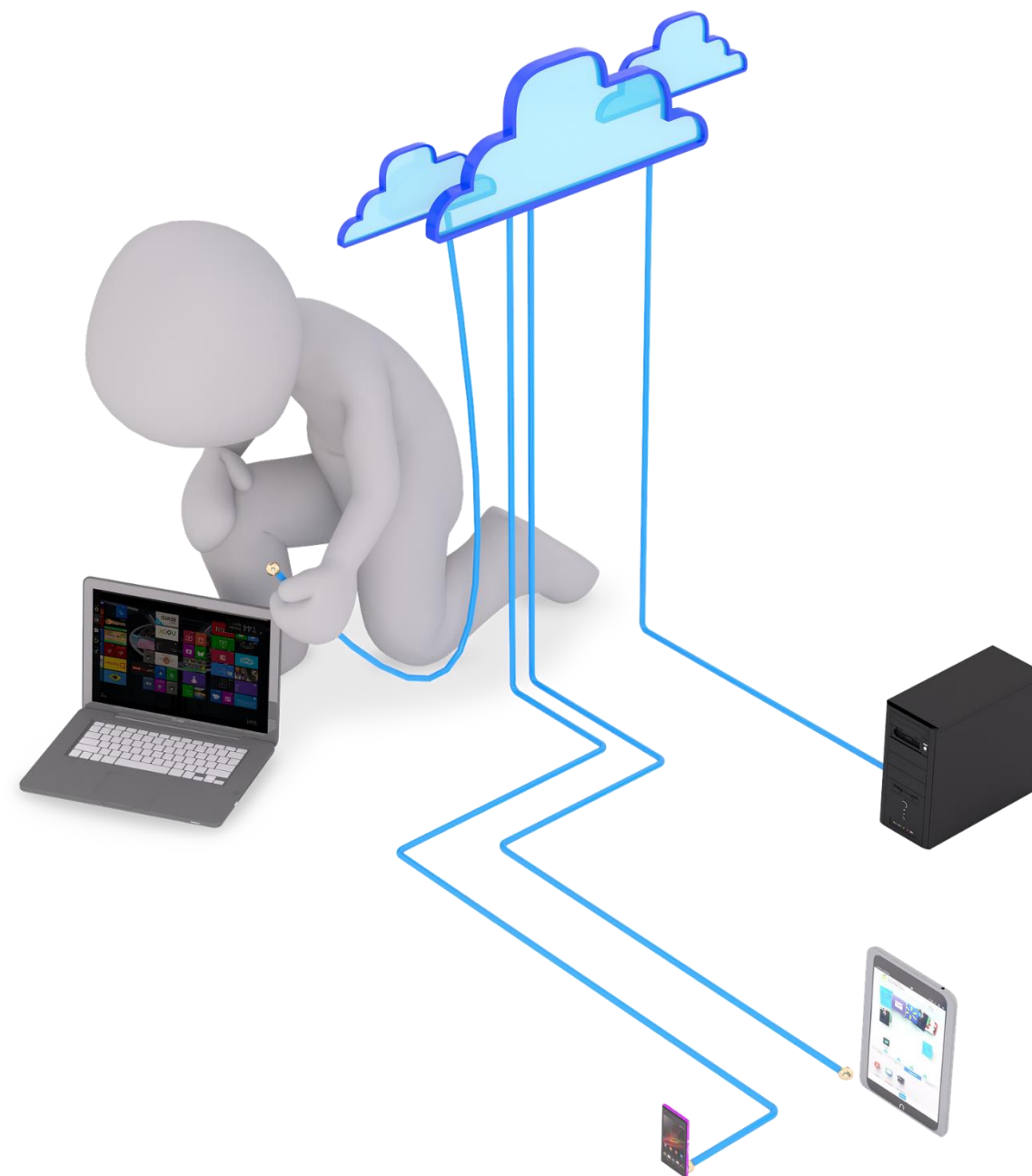
- ✓ If all previous points have been checked and found ok, switch on the transmitter without output power and verify if any alarm is present on front panel.
- ✓ Only in case of no alarm, increase the output power.







- ✓ Compare your meter reading to the factory test data (you should have copies of it). In case of trouble, formulate a clear description of the problem with all the details and contact DB Elettronica indicating both model and serial number of the unit.



- ✓ In case the remote-control option has been installed in the unit, remember to use also the web page to easily compare the working data with the expected data. If you have the possibility to give a remote connection to the factory, this could be an easier way to detect any cause of failure!

Remember: a well-done check saves time and money!





Stay safe, stay healthy!



DIGITAL BROADCAST

[www.dbbroadcast.com](http://www.dbbroadcast.com)



[www.screen.it](http://www.screen.it)